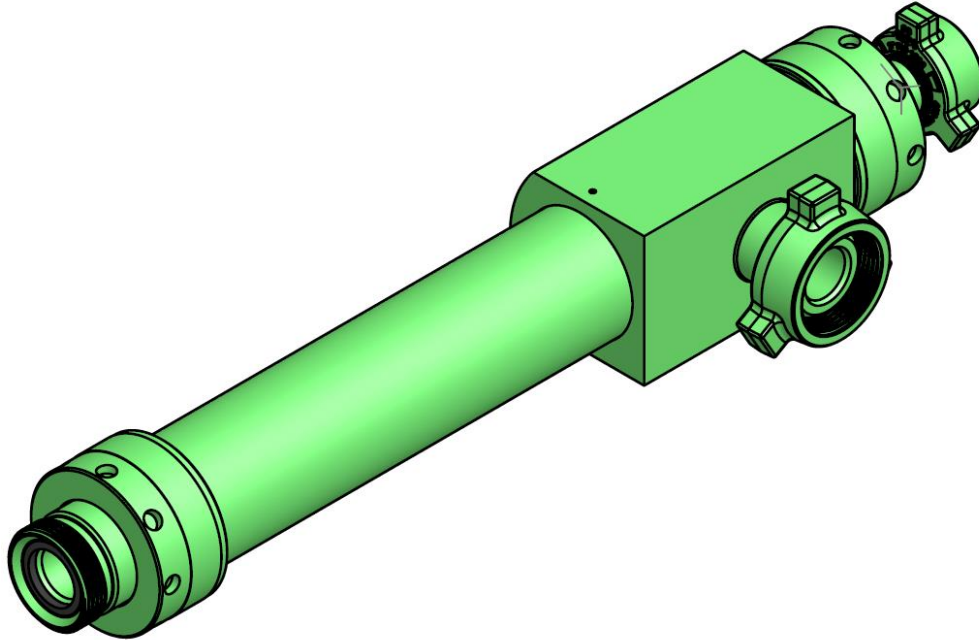
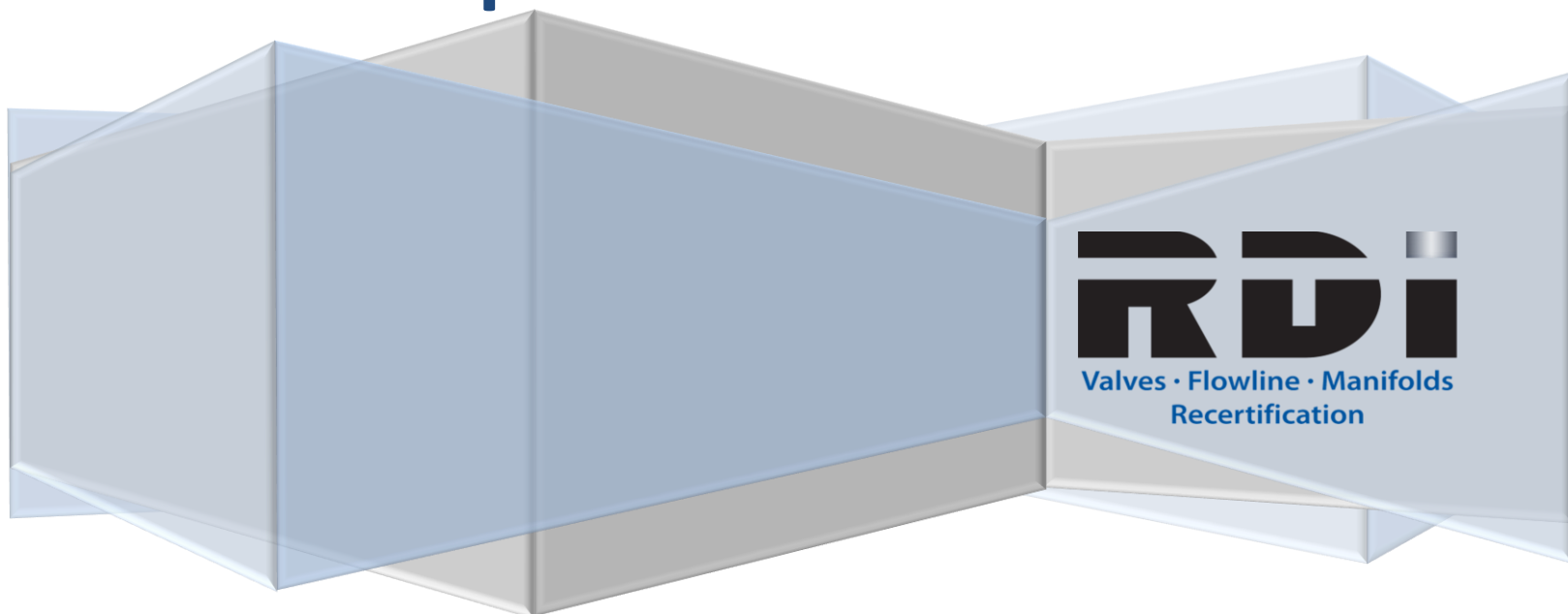


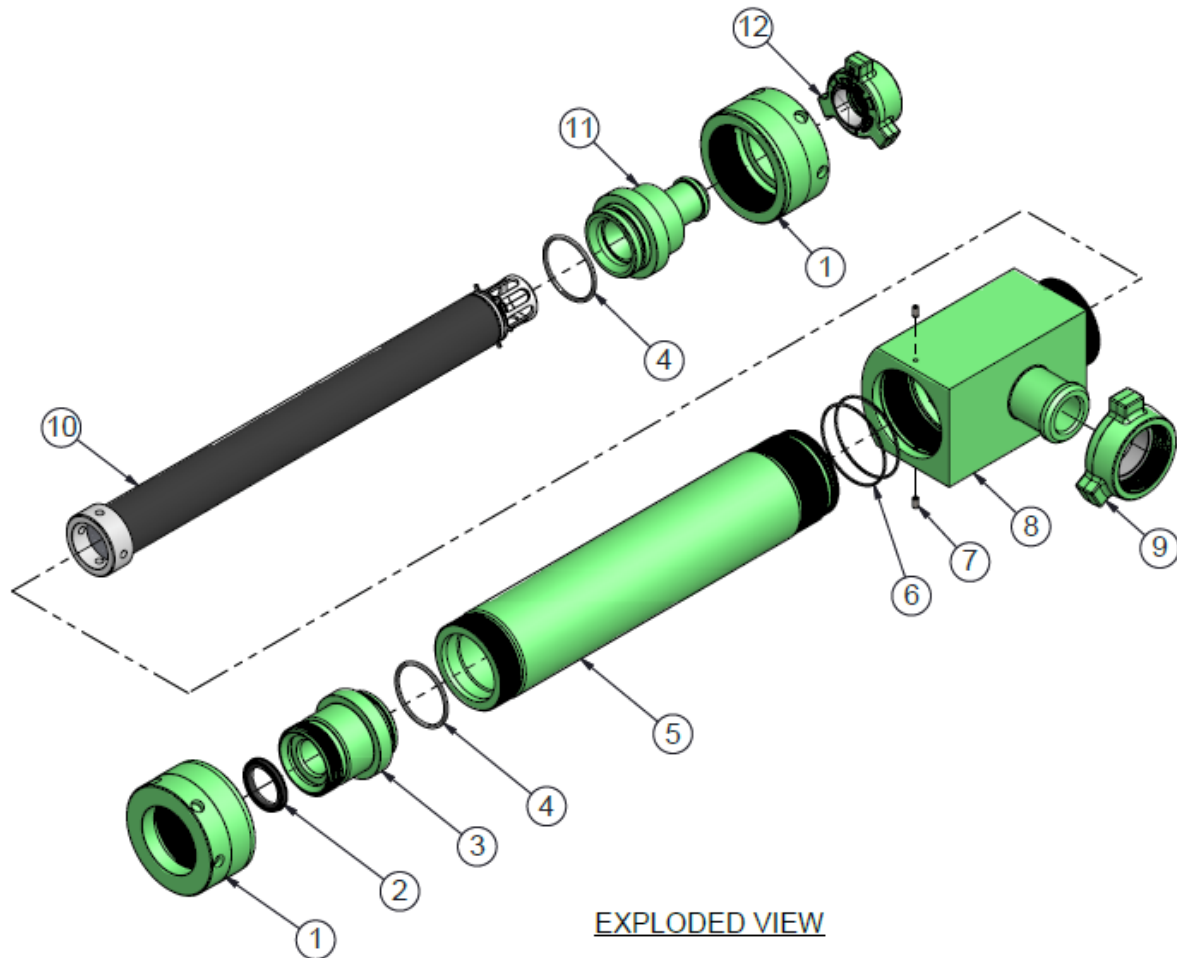
# Red Deer Ironworks



## DBBL0419-20 Style Screen Replacement Manual



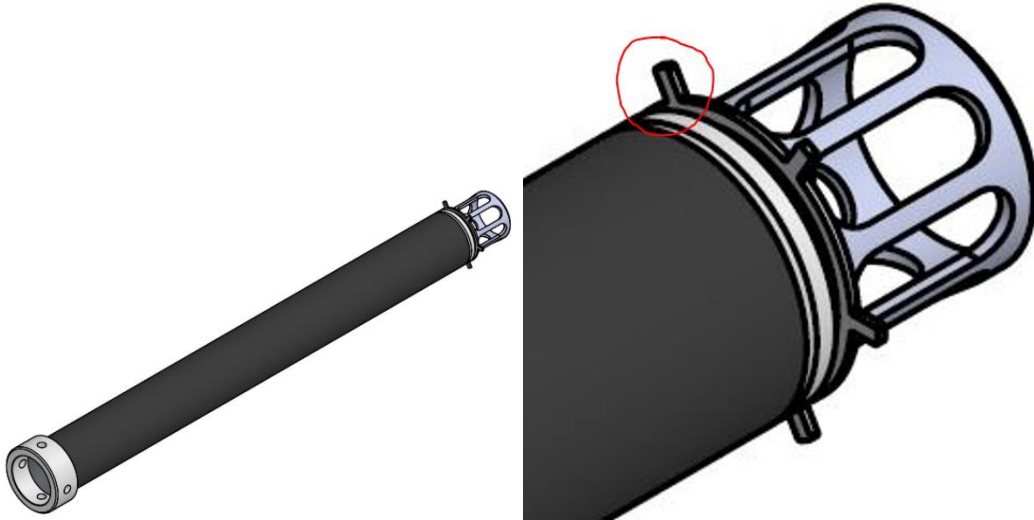
This instruction manual is for all debris catcher barrels with the DBBL0419/20 style threaded barrels. Manifolds that currently utilize this style barrel are: MANDC0419, 420, 421, 422, 423, 424, 425, 426 427, 428, 435, 436, 441, 442, 447, 448, 449, 450, 455, 456, 459, 460, 468, 469, 470, and MANDC0471. This manual applies to all the above listed debris catchers.



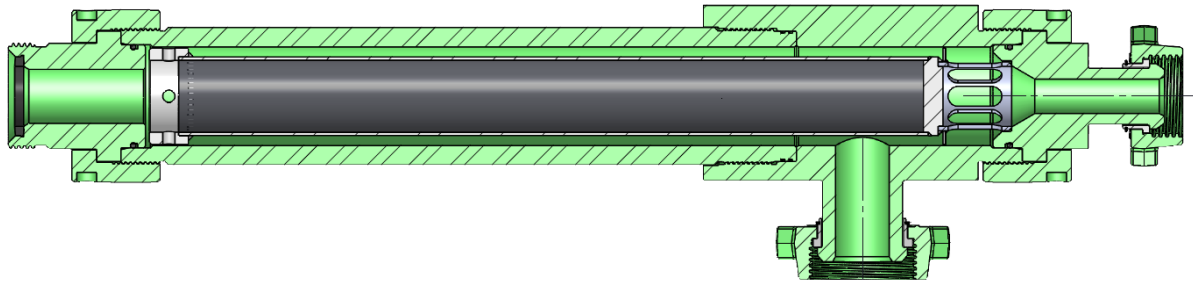
**Procedure to replace the screen.**

1. Isolate the debris catcher barrel.
2. Bleed pressure from the debris catcher barrel.
3. Loosen the Bowen nut (Item 1) on the bottom/downstream end of the catcher barrel assembly.
4. Remove the Bowen nut and outlet crossover body (Item 11) and wingnut kit (Item 12) assembly from the catcher barrel tee (Item 8).
5. Remove and clean or replace the screen (Item 10).
6. Inspect the outlet crossover body and clean any debris from the screen pocket.
7. Inspect the barrel and clean any debris from the barrel especially just below the inlet crossover (Item 3).

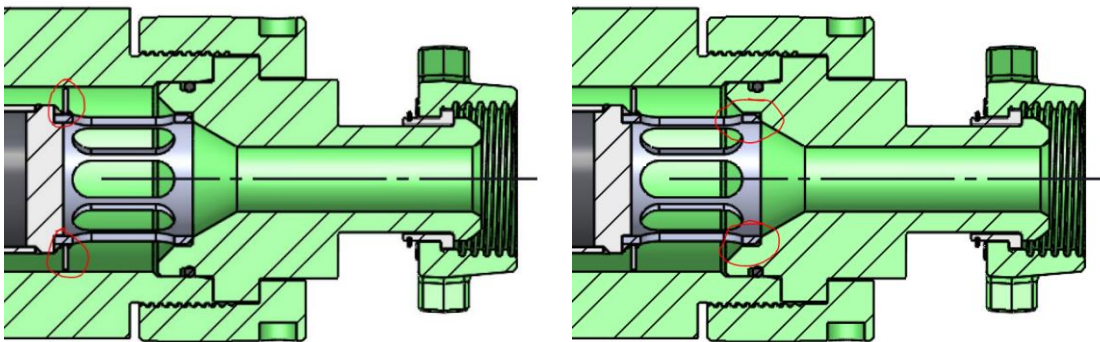
8. Insert the new or cleaned screen through the barrel tee (Item 8) into the catcher barrel (Item 5).
  - 8.1. The screen has a centralizer to help ensure that the bottom end stays centralized in the barrel.



- 8.2. Ensure that the tabs on the centralizer are intact and not damaged.



- 8.3. The centralizer tabs should centralize the screen inside the barrel so that when the outlet crossover body (Item 11) is re-installed the bottom of the screen fits properly into the pocket in the crossover body.



- 8.4. Failure to ensure the screen pocket in the outlet crossover and the barrel near the inlet crossover are clean and that the screen is centralized will result in damage to the screen including axial compression collapse.
- 9. Install the outlet crossover.
- 10. Install the Bowen nut and tighten until the outlet crossover bottoms out on the barrel tee. You should feel a hard stop.
  - 10.1. If there is considerable resistance while tightening the Bowen nut, stop and confirm that the screen is centralized in the barrel. The only resistance should be seating the outlet crossover O-ring in the seal bore of the barrel tee; anything more means that the screen is not centralized and it is being crushed.
- 11. If you have any questions, please contact RDI.

## RDI SALES & SERVICE CENTERS

For a list of our locations visit our website @  
<https://rdironworks.com/contact-a-location-near-you/>.



**Toll Free Phone: 855.973.4766**

**Email: [info@rdironworks.com](mailto:info@rdironworks.com)**



**Valves • Flowline • Manifolds  
Recertification**

**RDIRONWORKS.COM**